



A CLEAR VISION OF IMAGING



A product range available in 52 countries

Within just ten years, Owandy has become a world leader in dental imaging.

After initially developing dental practice management software exclusively for the French market, to which Owandy is the leading supplier, the company achieved global success with its extensive range of imaging and radiography systems.

With a product range retailed in 52 countries, the 100% French-owned Owandy Group is currently expanding across every region of the world.

The company's Research & Development programme provides a solid basis for growth, enabling Owandy to maintain its technological leadership and continue its conquest of international markets.

Innovation is vital in retaining the group's competitive edge and its reputation for scientific credibility.

Product and service innovation form part of a drive to enhance our understanding and improve our products, matched by a determination to meet our customers' specific needs and to respond to changing demand.



Owandy has **6 subsidiaries** in Germany, Belgium, China, Spain, the US and Italy.



Owandy is committed to a policy of sustainable development based on sound strategic and commercial decisions to meet long-term **environmental challenges**.

Owandy innovation awards

1998

The **DSX-730**, the first ergonomically designed universal sensor with a 730 sq. mm surface area. Accredited by the US-based Clinical Research Association, which rated it among the world's top three sensors in laboratory testing.

1999

Launch of the first fully digital and multi-position **Smilie** endoscopic autofocus camera in France.

2000

The **Smilie** camera was named the "Best Camera in the World" in laboratory testing by the Clinical Research Association in the USA.

2001

Development of the **Upix** sensor, the world's first non-tethered sensor.

2002

Presentation and marketing of the digital panoramic radiology unit, **I-Max Plus**, at the ADF Conference.

2003

Launch of the **Real Hi-T** universal buccal cavity camera. Digitized at source by the CCD High Tech sensor, the detailed image is reproduced in natural colours.

2004

Accreditation of the **I-Max** panoramic unit by the US Food and Drug Administration.

2005

Launch of the ultra-high resolution intra-oral **Krystal-X** sensor and the **I-Max Easy** digital panoramic unit.

2006

Launch of the **Krystal-X WiFi** sensor - the first WiFi sensor in the world. Teleradiography and Tomography options added to the **I-Max Plus**.

2007

The **Krystal-X** range was enhanced by the **Krystal-X Easy** unit and the new Size 1 sensor. Owandy showcased its complete market range at the IDS 2007 Conference in Cologne.



- Head office in Champs-sur-Marne (77)
- Sales & Marketing Services
- Customer Services, Hot Line
- Sales Administration
- Training Centre



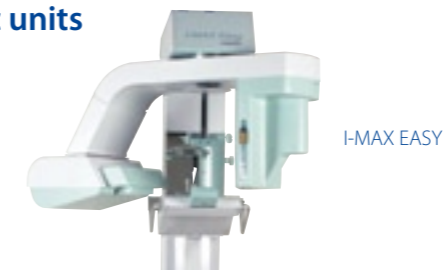
- Research & Development Centre in Les Ulis (91)
- Production and repair unit
- Dispatch Centre

O W A N D Y D E N T A L I M A G I N G

Digital sensors



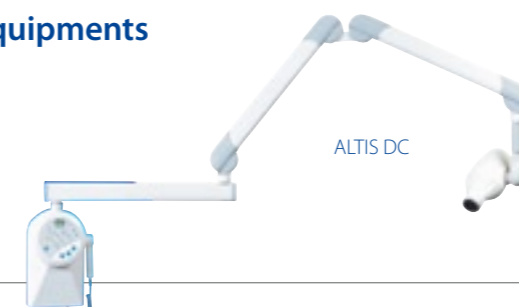
Panoramic units



Cameras



Radiology equipments



Software



Owandy

all around the world



52 countries

- Algeria
- Andorra
- Argentina
- Australia
- 🏠 Belgium
- Brazil
- Bulgaria
- Canada
- 🏠 China
- Colombia
- Croatia
- Cyprus
- Czech Republic
- Egypt
- Emirates
- Estonia
- 🏠 **France**
- 🏠 Germany
- Greece
- Hong Kong
- Hungary
- India
- Iran
- 🏠 Italy
- Ivory Coast
- Japan
- Korea
- Kuwait
- Latvia
- Lebanon
- Lithuania
- Mexico
- Morocco
- Norway
- Poland
- Portugal
- Qatar
- Russia
- Serbia
- Singapore
- Slovakia
- Slovenia
- South Africa
- 🏠 Spain
- Sweden
- Switzerland
- Tunisia
- Turkey
- Ukraine
- 🏠 United Kingdom
- United States
- Vietnam

🏠 Owandy Subsidiary • Retailer



6, allée Kepler - 77420 Champs sur Marne - France
Tel: +33 (0)1 64 11 18 18 - Fax: +33 (0)1 64 11 18 10
Email: info@owandy.com - www.owandy.com